

apartament 1.10

piętro **1+2**
 pokoje **4**
 metraż **88,82 m²**

parter
36,57 m²

1. salon
 + aneks kuchenny
24,95 m²

2. wc
2,05 m²

3. wiatrołap
5,19 m²

4. hall
3,19 m²

5. schowek
3,07 (1,19) m²

6. taras
6,06 m²

7. ogródek
19,70 m²

piętro
52,25 m²

1. sypialnia
13,96 m²

2. sypialnia
10,87 m²

3. sypialnia
10,09 m²

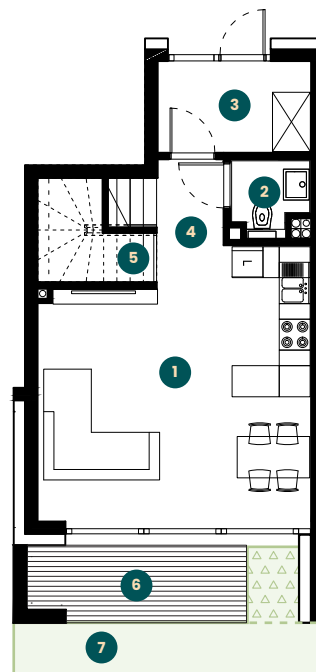
4. łazienka
4,43 m²

5. hall
6,34 m²

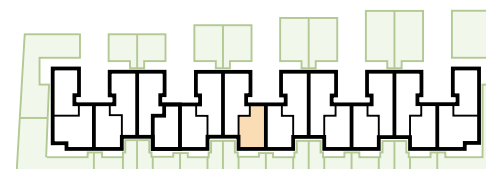
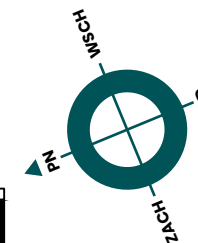
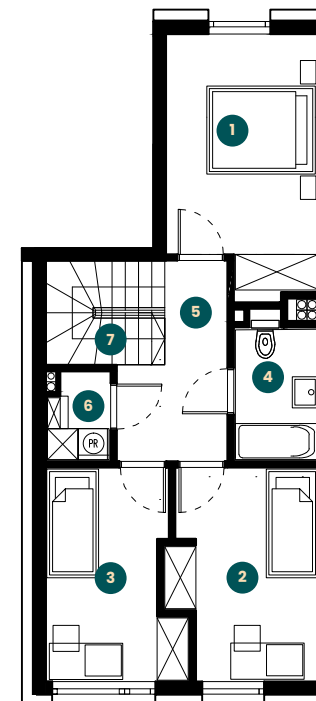
6. pom. gosp.
1,98 m²

7. schody
4,58 m²

PARTER



PIĘTRO





parter
36,57 m²



piętro
52,25 m²